

## Cladding and Screening Maintenance Guidelines

### Oil or stain finish

#### If timber is coated with pigmented Protector wood oil or stain it will:

- Help to maintain and enhance colour for longer.
- Reduce surface cracking (checking).
- Improve stability (reduce expansion and contraction).
- Increase lifespan.

#### Things to expect

- The wood will begin to go grey after about 24 months of exposure to the weather if it is not re coated.
- Cladding in North facing (southern hemisphere) or south facing (northern hemisphere) or heavy weather-exposed aspects to fade and age quicker than timber located in other aspects.
- Some movement of timber as it expands and contracts
- Possible minor surface cracking (checking).
- Possible 'fibre pull' splitting at the lamination glue lines.
- The surface may appear blotchy or dirty, this may be due to mould growth which can occur, especially in humid or wet environments.

#### Minimum maintenance

Cladding must be cleaned regularly (minimum every 12 months) with mild detergent such as Sioo:x Maintenance Wash and soft brush, rinse with water.

**Note:** High pressure water blasting is not allowed.

A maintenance assessment is required at least every two summers as follows:

- a Clean the cladding.
- b Apply 1 or 2 coats of Protector Oil or other penetrating stain according to coating manufacturer's recommendation as colour starts to fade. The regularity of re-coat will depend on the aspect of timber to the weather.
- c Check all weatherboards, junctions, flashings, mouldings and replace or re-mediate as required to maintain weather tightness of the cladding system.

#### In the case of light mould or discolouration

Use Rejuvenator or other similar timber cleaner and a soft brush, rinse with water.

Apply 1 or 2 coats of pigmented Protector Oil or other penetrating stain as appropriate onto dry timber.

#### In the case of heavy and persistent mould

Use a sodium hypochlorite based cleaner such as Resene Moss and Mould, apply with a soft brush and leave for 10 minutes, then rinse thoroughly with water. Wait until wood is dry and then spray on mouldicide such as Resene Deep Clean or similar.

Apply 2 coats of Protector Oil or stain as appropriate onto dry timber.

#### Sioo:x coated timber

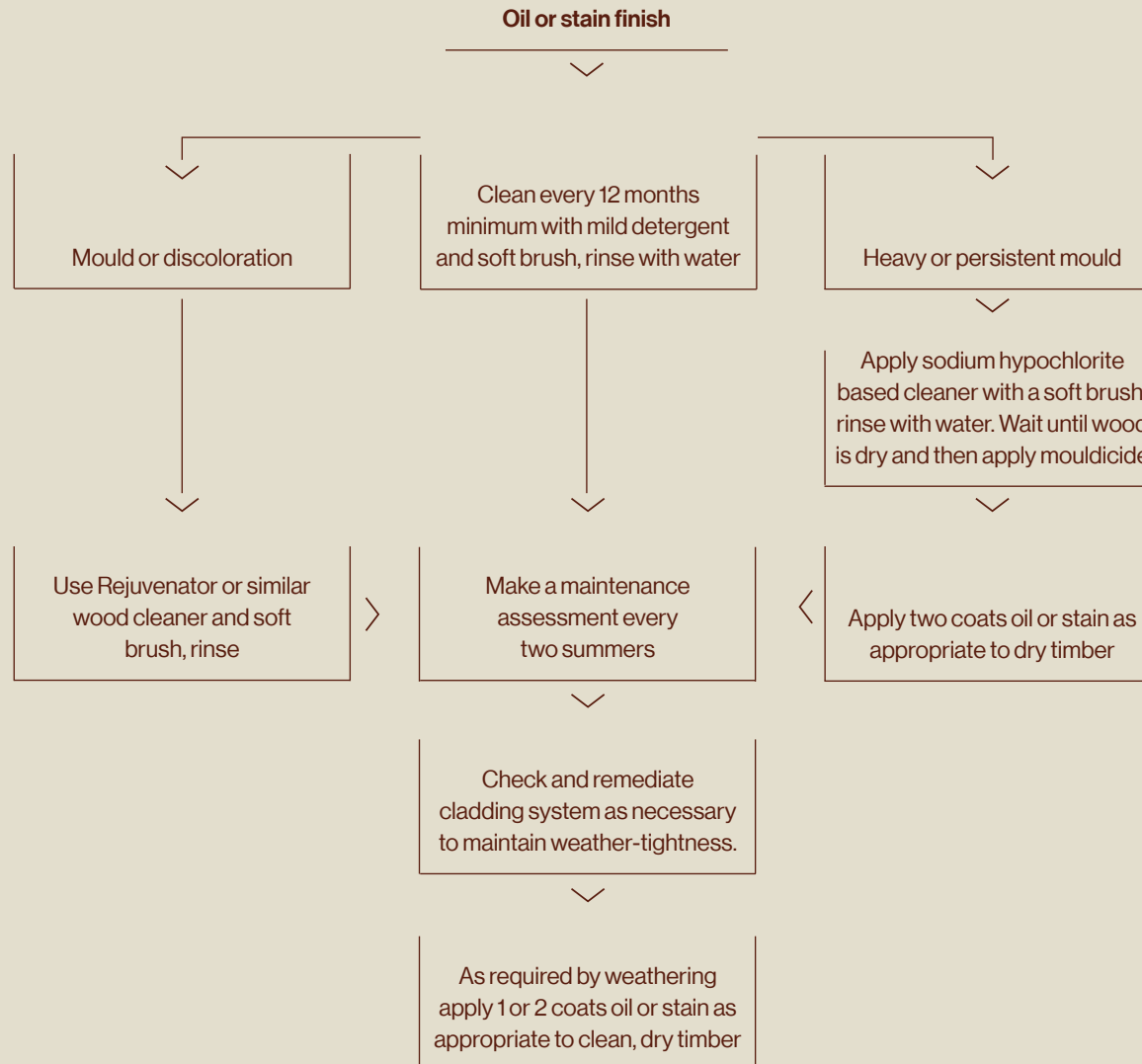
Apply 1 coat of Step 2 Premium Wood Protection Panel surface treatment after 4-7 years of weathering.

Clean and re-apply full system (Step 1 and Step 2) every 10-15 years.

Dirt, algae and mould may occur on Sioo:x products especially in shady areas and during wet periods. Keep the surface clean using Sioo:x Maintenance Wash. Applying with a medium-stiff brush leave 10 mins and rinse. Minor damage can be treated with Step 2 Premium Surface Protection Panel. For major damage or particularly exposed areas, first apply Step 1 Premium Wood Protection Panel followed by Step 2 Premium Surface Protection Panel and allow to weather.

## Cladding and Screening Maintenance Guidelines

### Oil or stain finish



## Cladding and Screening Maintenance Guidelines

### Paint finish

#### Things to expect:

- Cladding in North facing (southern hemisphere) or south facing (northern hemisphere) or heavy weather-exposed aspects age quicker than timber located in other aspects.
- Some movement of timber as it expands and contracts.
- Possible minor surface cracking (checking).

#### Minimum maintenance:

Cladding must be cleaned regularly (minimum every 12 months) with mild detergent and soft brush, rinse with water.

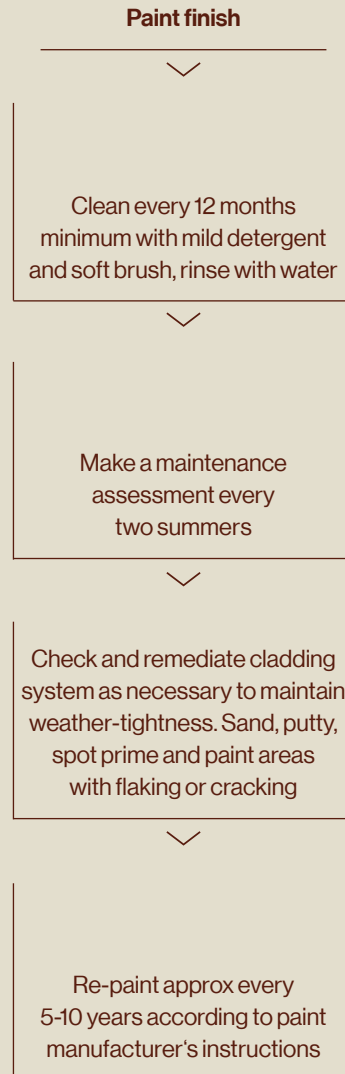
**Note:** High pressure water blasting is not allowed.

A maintenance assessment is required at least every two summers as follows:

- a Sand back areas of weatherboard where flaking or cracking is occurring- putty, sand as appropriate- then spot prime and apply two coats of exterior paint as required.
- b Check all weatherboards, junctions, flashings, mouldings and replace or remediate parts as required to maintain weather tightness of the cladding system.
- c Re-coat the weatherboards with exterior paint as required by the coating manufacturer's recommendations (typically between 5 to 10 years).

# Cladding and Screening Maintenance Guidelines

## Paint finish



### General enquiries

**P** +64 9 249 0100  
**F** +64 9 249 0101  
**E** [info@abodo.co.nz](mailto:info@abodo.co.nz)  
**W** [abodo.co.nz](http://abodo.co.nz)

### Postal address

Abodo Wood Limited  
PO Box 2011366  
Auckland Airport  
Auckland 2150, New Zealand

### New Zealand headquarters

Abodo Wood Limited  
62 Ascot Rd  
Mangere  
Auckland 2022, New Zealand